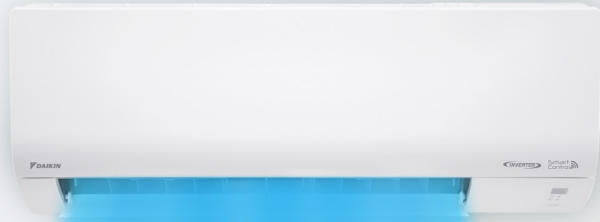




FTKF-0921-F



# R32 Inverter

Wall Mounted  
FTKF Series

**R32**

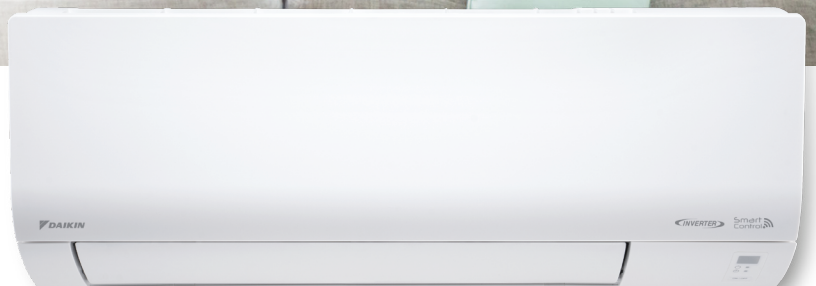


Built-In **Wifi** Control



# FTKF

STANDARD INVERTER



# Features



## Econo Mode

This mode limits the maximum power consumption. It improves operating efficiency while fulfilling basic human comfort needs.



## Durable PCB (PCB Voltage Shield)

Newly designed printed circuit board (PCB) for higher voltage surge tolerance. This PCB can easily handle large variations of voltage (130V-415V) therefore ensuring longer life span.



## Gin-Ion Blue Filter

This filter is treated with a positively charged silver ion, which efficiently draws viruses onto its surface and decomposes up to 99.9% in 2 hours. On top of that, this filter can deactivate bacteria and inhibit fungal growth on its surface to improve the quality of indoor air for a healthier lifestyle. The filter delivers consistent performance for around a year if filter is cleaned once every 2 weeks.

Substances can be collected and deactivate by filter:



## Easy Maintenance with Removable Drain Pan

The drain pan collects condensation from the indoor heat exchanger fins. Removable drain pans help to reduce the cleaning time.



## Anti-Corrosion Treatment of Outdoor Heat Exchanger Fins

The outdoor unit's heat exchanger fins are processed using a special anti-corrosion treatment. The surface is covered with a thin acrylic resin layer to enhance the fins' resistance to salt corrosion.



## GO DAIKIN

This built-in network adaptor (AWM61A01) and the app turn a smartphone into a remote controller that can be used inside or outside the home. Together, they help to not only save energy and maintain comfort but also eliminate any worries of forgetting to turn off your air conditioner! (Certain app functions are optional.)



## Compact & Easy To Use Controller

- Prominent temperature display.
- Real-time clock display.
- Easily accessible buttons.



ARC486A1

# GO DAIKIN

In-Home & Out-Of-Home Function Allows You To Control Your AC At Anywhere Anytime.

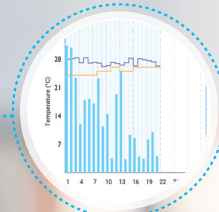


Scan the QR code to find out more!



## GO CONVENIENCE

- In-home & Out-of-home function allows you to control your AC at anywhere anytime.
- Weekly scheduling allows you to set your AC at your preferred timing at a weekly basis.



## GO SAVE

- Statistical energy usage graphs that allows you to monitor and keep track of your daily energy usage to ensure an efficient AC operation.
- With this, greater savings can be achieved as you can now smartly monitor your AC energy consumption!

\* The energy consumption values are based on averaged data; Monetary values is calculated based on domestic tariff A at 21.8sen/kWh.



## GO COMFORT

- Different operational modes allows you to enjoy the different kinds of cooling experience.
- Advance control\* that provides you with even more cooling options for a better cooling comfort.

\* May vary depends on model availability



## GO SHARE

- User control sharing easily allows you to share your AC controls with your family members through a simple QR code scanning.
- You can unbind the controls or restrict certain app functions of the AC from your family members at any time you desire.

# GO DAIKIN Configuration



Internet



OUT OF HOME



GO DAIKIN  
Control your AC at  
anywhere and anytime

## SPECIFICATIONS

|                       |                          |
|-----------------------|--------------------------|
| Input Voltage         | DC 5V                    |
| Power Consumption     | 750mW                    |
| Size (H x W x D)      | 32.1mm x 50.1mm x 15.0mm |
| Mass                  | APPROX. 23g              |
| Wireless Lan Protocol | IEEE 802.11b/g/n         |
| Frequency Range       | 2.4GHz - 2.48GHz         |
| Encryption            | WPA/WPA2                 |

## Required for Operation:



Network Adaptor  
(Built-in)  
AWM61A01



Android™ Phone  
or iPhone



GO DAIKIN App  
(free)



Wireless  
Router



Internet

## Available At:



iOS 9.0 or above



Android 5.0 or above



Android 5.0 or above

## 3 Simple Steps For Unit Pairing

### STEP 1



### STEP 2



### STEP 3



Scan QR code to see  
GO Daikin setup video

## ENJOY 2 YEARS FREE\*1 UPGRADE TO PRO ON US

| Function List                            | Standard<br>RM0.00 | Pro<br>RM11.99<br>Per year |
|--|--------------------|----------------------------|
| Standard Control Functions *2            | ✓                  | ✓                          |
| User Control Sharing to Family & Friends | ✓                  | ✓                          |
| In-Home AC Control                       | ✓                  | ✓                          |
| Out-Of-Home AC                           |                    | ✓                          |
| Indoor/Outdoor Temperature Monitoring    |                    | ✓                          |
| Energy Usage Monitoring                  |                    | ✓                          |
| Weekly Scheduling                        |                    | ✓                          |
| Countdown Timer                          |                    | ✓                          |
| Auto Error Code Detection                | ✓                  | ✓                          |
| Voice control (Alexa, Google Home)       | ✓                  | ✓                          |

### Smart Control Subscription:

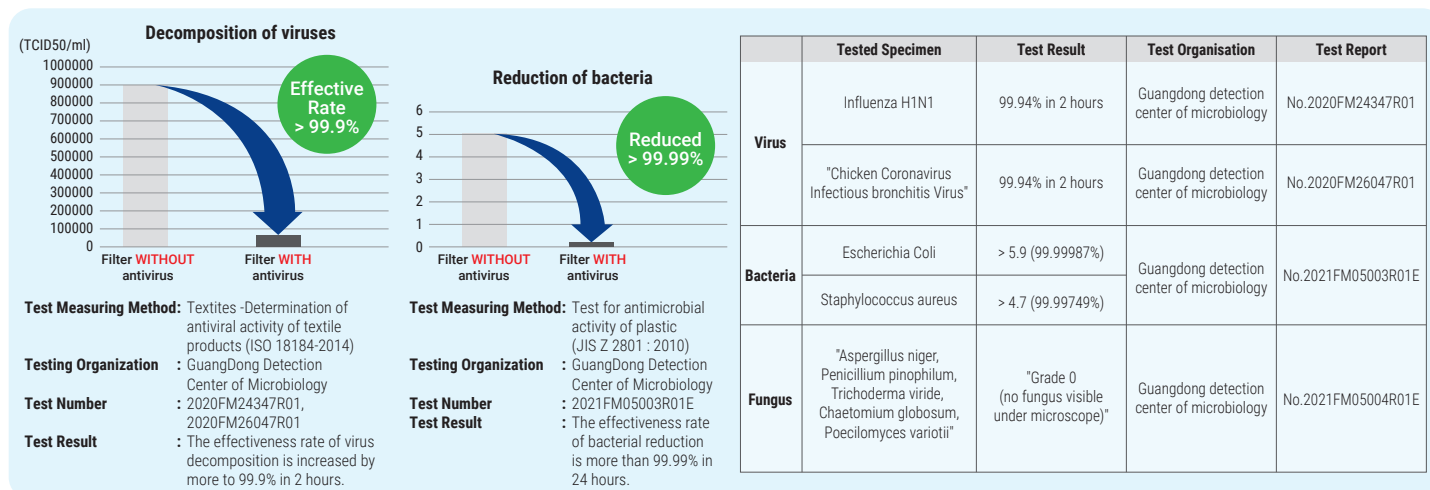
- Free 2 years upgrade to Smart Control Pro upon first time successful pairing to network adaptor (AWM61A01). Package will switch back to Smart Control Standard (FREE) after 2 years. User can choose to upgrade to Smart Control Pro with subscription of RM 11.99 yearly per air conditioner.
- Function includes: On/Off, Operation Mode, Fan Swing, Fan Speed, Powerful Mode, Quiet Mode, Sleep Mode.

### Go Daikin App:

- An Internet connection through mobile data or WiFi network is required to use Smart Control function.
- Connectivity of App to AC will depend on the effective coverage area of your Local Area Network (LAN).
- This device supports DHCP (Dynamic Host Configuration Protocol) only. Ensure that your router has DHCP server option function activated before pairing.
- The controllable functions and features may differ depending on the model.

## Gin-ION Blue Filter Test Result

The Gin-ION Blue Filter has been tested and confirmed to decompose viruses, bacteria, and inhibit fungal growth on the filter surface.



## Specification



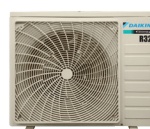
FTKF25BV1MF



FTKF35/50/71BV1MF



RKF25AV1M



RKF35AV1M



RKF50/71AV1M



FTKF25/35/50BV1MF



FTKF71BV1MF

| Model name                | Indoor unit                                 |       | FTKF25BV1MF           | FTKF35BV1MF             | FTKF50BV1MF             | FTKF71BV1MF             |
|---------------------------|---|-------|-----------------------|-------------------------|-------------------------|-------------------------|
|                           | Outdoor unit                                |       | RKF25AV1M             | RKF35AV1M               | RKF50AV1M               | RKF71AV1M               |
| Capacity                  | Rated (Min - Max)                           | kW    | 2.64 (1.00 - 2.70)    | 3.60 (1.20 - 3.81)      | 5.28 (1.52 - 5.42)      | 7.03 (1.93 - 7.18)      |
|                           |   | Btu/h | 9,000 (3,400 - 9,200) | 12,300 (4,100 - 13,000) | 18,000 (5,200 - 18,500) | 24,000 (6,600 - 24,500) |
| Power supply              | 1 phase, 220-240 V, 50 Hz (Power to indoor) |       |                       |                         |                         |                         |
| Running current           | Rated (Min - Max)                           | A     | 3.93                  | 5.37                    | 8.24                    | 8.61                    |
| Power consumption         |   | W     | 860 (200 - 1,050)     | 1,200 (200 - 1,250)     | 1,880 (380 - 1,950)     | 1,965 (380 - 2,300)     |
| CSPF                      |   | Wh/Wh | 4.60                  | 5.22                    | 5.02                    | 6.00                    |
| Energy rating             | 4 star                                      |       |                       |                         |                         |                         |
| Heat insulation           | Both liquid and gas piping                  |       |                       |                         |                         |                         |
| Indoor unit               |   |       | FTKF25BV1MF           | FTKF35BV1MF             | FTKF50BV1MF             | FTKF71BV1MF             |
| Airflow rate              | H   | cfm   | 340                   | 400                     | 430                     | 640                     |
| Sound pressure levels     | H / M / L / Q                               | dB(A) | 39 / 33 / 26 / 21     | 39 / 34 / 26 / 21       | 42 / 39 / 32 / 29       | 43 / 41 / 36 / 30       |
| Dimensions                | H x W x D                                   | mm    | 280 x 730 x 213       | 288 x 770 x 234         |                         | 297 x 990 x 273         |
| Unit weight               |   | kg    | 8.5                   | 9.0                     | 9.5                     | 13.0                    |
| Outdoor unit              |   |       | RKF25AV1M             | RKF35AV1M               | RKF50AV1M               | RKF71AV1M               |
| Refrigerant               |   | Type  | R32                   |                         |                         |                         |
| Sound pressure levels     | H   | dB(A) | 48                    | 49                      | 52                      |                         |
| Dimensions                | H x W x D                                   | mm    | 418 x 695 x 244       | 550 x 658 x 273         | 615 x 845 x 300         |                         |
| Unit weight               |   | kg    | 19.0                  | 21.0                    | 33.0                    | 37.0                    |
| Piping connection         | Liquid                                      | mm    | ø6.35                 |                         |                         |                         |
|                           | Gas   |       | ø9.52                 |                         | ø12.70                  |                         |
| Chargeless pipe length    |   | m     | 7.5                   |                         |                         |                         |
| Maximum pipe length       |   |       | 20                    |                         | 30                      |                         |
| Maximum height difference |   |       | 15                    |                         | 20                      |                         |
| Heat Exchanger            |   | Type  | Hydrophillic Blue Fin |                         |                         |                         |

- Remarks:
- Due to product innovation, all specifications are subjected to change by the manufacturer without prior notice.
  - All units are being tested and comply to ISO5151.
  - Nominal cooling capacity are based on the conditions: 27°C DB / 19°C WB indoor and 35°C DB outdoor ; piping length 7.5m.
  - Sound pressure levels are measured in anechoic chamber according to JIS C 9612 standard. During actual operation, sound pressure level will be higher as a result of room specification condition.
  - The Gin-ION Blue Filter is not a medical device. Benefits shown are only effective for substances which are directly attached on the filter surface.

### DAIKIN MALAYSIA SALES & SERVICE SDN. BHD.

Call Centre: 1300-88-DAIKIN(324546)

198301014326 (109719-M)

Email: sales\_enquiry@daikin.com.my, customer\_service@daikin.com.my

Branches:

- Kedah Tel: 04-730 5670
- Johor Tel: 07-557 7788
- Penang Tel: 04-331 1670
- Pahang Tel: 09-567 6778
- Perak Tel: 05-548 2307
- Kelantan Tel: 09-747 4578
- Negeri Sembilan Tel: 06-768 8969
- Sabah Tel: 088-722 194
- Melaka Tel: 06-288 1133
- Sarawak Tel: 082-333 299

Website: www.daikin.com.my

Authorized dealer: